



OWGRA

Osterley & Wyke Green Residents' Association

eNewsletter – 31st January 2020

Welcome to the second OWGRA eNewsletter of 2020. The festive break is well and truly behind us now, and things are starting to happen now that everyone is back at work. The political significance of the date of this eNewsletter is not lost on us, but rather than express an opinion we'd just like to say one thing. Irrespective of whether someone voted Leave or Remain, we are all residents of Osterley & Wyke Green and neighbours of each other; let's continue to live and work together as friends and neighbours for the good of our area.....

In this issue

- In Planning (page 2-6), we have news on the construction of the Bolder Academy (including a live video stream), an amazing (in a bad way) approval in Ealing, a public enquiry on a proposal in Brentford, an update on the Ballymore development there and the latest on Warren Farm.
- Under London Borough of Hounslow (LBH) News (pages 7 - 8) there's news of rises in Council Tax and Parking fees (that soon got rid of any residual Christmas bonhomie..), the council looking for artists and consultations underway.
- In Local News (pages 9 - 10) there's news of Brentford Sports Fest, half-term craft classes for children, events at Osterley Park, The Watermans Centre in Brentford (including Bollywood dance classes...), Brentford Musical Museum and Gunnersbury Park, an art exhibition and two local history stories.
- Under Crime and Local Policing (pages 11 and 12) the criminals are definitely back off holiday, with news on catalytic converter thefts, car theft, cold callers / suspicious people ringing doorbells, and a very depressing story of a stabbing if you're worried about young people. (Also Pages 18 & 19 are our local police team's latest Newsletter)
- Finally under Other News (pages 13-17) items include the restart of our litter-picking, trolleys on their travels, depressing news if you travel / need to visit the hospital, and several organizations looking for people to join them (including one that will pay you).

We hope this eNewsletter is informative and welcome any feedback – especially anything we should include in future eNewsletters.. Feel free to pass it on to friends and neighbours. If you're not a member of OWGRA, please consider joining – details and a membership form can be found on our [website](#). And if you would like to help us in running OWGRA then please do [contact us](#) – we always welcome any help, even if you can only spare a few hours a month. We will lose a couple of members of the committee this year and really need to replace them.

Happy reading from Laurence Hawcroft, (Vice-Chair), and the OWGRA Committee.

Planning News

TESCO/HOMEBASE DEVELOPMENT

If you're thinking of visiting the "Syon Lane Future" Consultation Cabin in the Tesco car park, they are now back to their normal opening hours (4.00pm – 7.00pm: Tuesdays, 9.00am – 12.00pm: Saturdays).

DEVELOPMENTS IN OTHER AREAS



some very strange times....

Regular readers will be aware of the profusion of wholly inappropriate developments currently in the works in our area. But even we were knocked back by this development, which has just been approved by Ealing Council.

[This TW8 article](#) gives more details of the development and what the local residents are doing to try and restore some sense in the planning system. We truly live in

BOLDER SCHOOL CONSTRUCTION COMMENCES

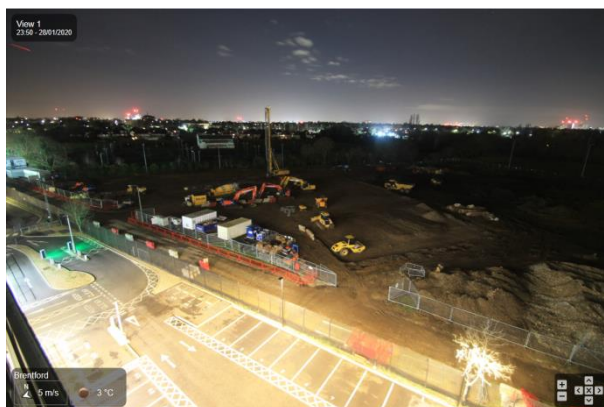
Work on the site of the new Bolder School down McFarlane Lane off Syon Lane has now started. The company building it is called Bowmer and Kirkland. They have distributed a Newsletter (shown below) introducing themselves and their construction timeline.

They state that their work over the next few months will include:

- Piling
- Foundations works
- Structural steel frame

They also state that as we move towards the summer months, they will be undertaking roadworks along Syon Lane which is likely to have the most impact on traffic along Syon Lane. We will provide further updates on this as soon as we have them.

In terms of how they will be managing their activities onsite (working hours, etc.), details of what they are permitted to do are contained in their [Construction Logistics Management Plan \(CLMP\)](#) which is available from the council website.



In addition if you wish to monitor the activities on the site from your home, they have even installed [a CCTV camera](#) viewing the site 24 hours a day. This can be accessed from this link. This is what we saw at 23:50 on 28/1/20.....

If local residents notice any activities that are adversely impacting them, please let us know and we will contact the developer.

Bolder Academy, Isleworth

Community Update

**BOWMER
KIRKLAND**



For more about
Bowmer and
Kirkland, visit:
www.bandk.co.uk/
or @bandkbuild.
Or contact our PR
Manager Sarah
Millington on
01773 857514 or
sarah.millington@bandk.co.uk

Welcome to the first newsletter regarding construction of the new Bolder Academy School, Isleworth.

Project Information

We will keep you informed of our construction activities through regular newsletters. The development will be on land at the end of MacFarlane Lane, adjacent to the Goals Gillette Corner football club. Work is due to start November 2019. Our site hours will be 8am-6pm, Monday – Friday. Key project dates are:

- Nov 2019 - Site setup, Demolition Works.
- Jan 2020 – Piling foundations.
- April 2020 – Structural Steelwork.
- July 2020 – Brickwork start
- Early 2021 – Internal fit-out
- External carpark and drainage work
- Completion August 2021

As part of the works we have implemented a traffic route (See overleaf) that will ensure disruption is kept to a minimum. This plan will be issued to all subcontractors working on site and any companies supplying materials, whether that is a wagon of steel beams or paper for our printers. This diversion, alongside delivery management, will ensure traffic to the site continues to run smoothly.

Future newsletters will be issued on a regular basis. If you have any queries regarding the project, please contact our project manager, Alex Reynolds whose details are included below.





Considerate Constructors

Bowmer and Kirkland Ltd is a Partner of the Considerate Constructors' Scheme. Only a select number of high performing contractors achieve Partner status in the scheme, which now registers more than 400 sites a month. Partners are companies which have proved their commitment to improving the image of the industry through a large number of registered sites that have consistently performed to a high level.

Launched nationwide in 1997, the scheme was set up by the industry to improve the image of construction. Sites registering with the scheme are given marks following a Code of Considerate Practice, designed to encourage best practice beyond statutory requirements. The main areas of concern are: the environment, the workforce and the general public. Individual site performance and monitoring is carried out by an experienced industry professional who will assess the site's performance in the following categories: workforce, safety, community, appearance and environment. More: www.considerateconstructorscheme.org.uk

Considerate Constructors Scheme Code of Practice



Considerate constructors seek to improve the image of the construction industry by striving to promote and achieve best practice under the Code.

Enhancing the Appearance

Constructors should ensure sites appear professional and well managed.

- Ensuring that the external appearance of sites enhances the image of the industry.
- Being organised, clean and tidy.
- Enhancing the appearance of facilities, stored materials, vehicles and plant.
- Raising the image of the workforce by their appearance.

Respecting the Community

Constructors should give utmost consideration to their impact on

neighbours and the public.

- Informing, respecting and showing courtesy to those affected by the work.
- Minimising the impact of deliveries, parking and work on the public highway.
- Contributing to and supporting the local community and economy.
- Working to create a positive and enduring impression, and promoting the Code.

Protecting the Environment

Constructors should protect and enhance the environment.

- Identifying, managing and promoting environmental issues.
- Seeking sustainable solutions, and minimising waste, the carbon footprint and resources.
- Minimising the impact of

vibration, air, light and noise pollution.

- Protecting the ecology, the landscape, wildlife, vegetation and water courses.

Securing everyone's Safety

Constructors should attain the highest levels of safety performance.

- Having systems that care for the safety of the public, visitors and the workforce.
- Minimising security risks to neighbours.
- Having initiatives for continuous safety improvement.
- Embedding attitudes and behaviours that enhance safety performance.

Caring for the Workforce

Constructors should provide a

supportive and caring working environment.

- Providing a workplace where everyone is respected, treated fairly, encouraged and supported.
- Identifying personal development needs and promoting training.
- Caring for the health and wellbeing of the workforce.
- Providing and maintaining high standards of welfare.

The Code of Considerate Practice outlines the Scheme's expectations of all registered sites and companies, describing those areas that are considered fundamental by the Scheme in helping improve the image of construction.

For more information, call 0800 783 1623 or visit www.ccscheme.org.uk

PUBLIC INQUIRY ON PROPOSED NEW DEVELOPMENT



A public enquiry is underway regarding a proposal to develop five tower blocks on the site of the Citroen car dealership at Capital Interchange Way in Brentford. The scheme, which would see 441 new flats developed in buildings as high as 18 storeys was initially rejected by Hounslow Council planners in February 2018. They were concerned about the impact on heritage assets such as Strand on the Green, Gunnersbury Park and Kew Gardens. This decision was overruled by

the Mayor of London, Sadiq Khan. That decision has now been “called in” by the Housing Minister, resulting in this enquiry.

As can be seen, it is not likely that the proposed scheme will win any awards for quality architecture and innovative design.

BALLYMORE DEVELOPMENT ON BRENTFORD HIGH STREET

This development is continuing, with demolition of the shops along the south side of the High Street now underway. The scale of the development can be seen in the picture below, with Brentford High Street running from the bottom left to the top right, the River Thames shown in light blue at the bottom and the development in yellow (Car Park), light purple/blue/pink (Phase 1A) and orange (Phase 2).



In total, it will deliver 876 new flats, around 14,000 sq m of new retail, 4,000 sq m commercial space, and new public realm including an extended Thames Path.

Just what we need in the area – more flats.

WARREN FARM UPDATE

Warren Farm is located part-way along Windmill Lane, beyond the M4 flyover (and therefore in Ealing Council's area). This has been a sports complex with a number of pitches for decades. QPR Football Club submitted a proposal to convert it into their training ground (i.e. like Brentford FC's one on Jersey Road). After a very long fight, permission was granted in the face of determined opposition from local residents. But since then, nothing has happened with the site. We have no information per se, but can only guess that the club is still working to raise the necessary funds to go ahead. In the meantime [local residents have launched a further attempt to stop the development.](#)

QUICK TIPS FOR GOOD WINTER HEALTH



Our Local NHS group has published the following list of tips for good winter health

1. Can't get a GP appointment? Ask your GP or 111 to book you a hub appointment instead.
2. Ask your local pharmacist for advice about minor health problems.
4. Collect repeat prescriptions in good time.
5. Unsure what to do? Call 111 to speak to a fully trained advisor, 24 hours a day.
6. If you have a medical emergency, call 999 or go to A&E.

WELL-BEING NETWORK ACTIVITIES

The Hounslow Well-Being network describes their remit as *"building a community to help reduce stigma and encourage conversation around mental illness. By putting people at the heart of their own recovery, we hope to combat social isolation and loneliness and improve the overall health and wellbeing of local residents"* They run a wide range of activities, details of which may be found on their [website here](#). NOTE we found that, when we bring up the calendar of events, you need to press the "next month" button, and then the "prev month" button, for the events to show up; otherwise the page seems to stay on a "loading events" message.

COUNCIL TAX TO RISE

The council is planning [another increase in Council Tax this year](#), this time of 3.99%. This is the maximum amount allowed by the central government unless a referendum is held on a higher increase. It is the second year in a row that the borough has seen a rise by the highest amount (last year the increase was 4.99%). This year's increase will add £48.92 a year for a typical Band D property. In addition a further increase by the Mayor of London of his share of Council Tax bills will add a further £6.41 to the bill for a typical Band D property – so a total increase of £55.33.

We know the council is short of money, but it does seem that we are paying increasingly more for less and less...

COUNCIL LOOKING FOR ARTISTS...



Do you have some creative flair and want to show the community what home means to you?

Take part in the council's arts competition - [Home is where the Art is?](#) Create a piece of art on the theme of "home" using any type of material - painting, photography, collage, drawing or sculpture.

The closing date is 28 February 2020 and there will be an exhibition of the work in April 2020. For more information please contact Havendeep.Judge@hounslow.gov.uk, or call 020 8583 4147.

SOCIAL CARE INFORMATION FROM LBH

While LBH would like as many people as possible to access information online via

[CarePlace](#), the council does offer a limited range of leaflets and booklets.

Many adult social care publications [may be downloaded here](#) including their latest publication [A guide to adult social care in Hounslow](#) which offers a general overview of what people can expect when they get in touch. The new guide has a section for carers and a list of useful telephone numbers. Printed copies are available from LBH on request.

CONSULTATIONS UNDERWAY

Public Consultations being run by Hounslow Council currently open for feedback from residents include the following:

- [Parking and Business Permit Charges - Proposed Changes](#). The council is proposing changes to incentivise a move away from higher emission vehicles and towards low or zero emission models. They propose introducing discounts for zero emission vehicles, while charges for more polluting vehicles would be increased. For example, the current flat rate of £1.20 per half hour on street would be replaced with the following rates per half hour depending on the vehicle : (Zero emission vehicles - £0.80, Low emission - £1.20, All others - £1.60). Zero emission is defined as fully electric cars only. Low emission (for a passenger vehicle) is defined as any vehicle that was registered "*on or after 1 April 2017 whose CO2 emissions figure does not exceed 50g/km*". So anyone with a Toyota Prius registered before 1 April 2017 will not be classified as "low emission" Also, as [this article](#) explains, even a new Toyota Prius 1.8L appears not to be classified as "low emission" as its emissions are 75 g/km. Closing Date 12 Feb ([Details here](#)).
- [Community Infrastructure Levy – Proposed Increase](#). Hounslow Council is proposing increased rates of Community Infrastructure Levy (CIL) charging rates. These charges are levied on any development that results in increased floor space. The income received is used to help fund infrastructure (such as transport improvements, health and social care facilities, green and blue infrastructure) needed to support the council's planned growth in housing and mitigate adverse impacts of future development. The changes for our area consist of Large convenience-based retail (rate change proposed from £155 to £165 per square metre) and Residential development (rate change proposed from £110 to £160 per square metre). Closing Date 10 Feb. ([Details here](#)).
- [Braybourne Drive - cycle parking consultation](#). The council has recently installed several bikehangars across the borough. Bikehangars offer secure cycle parking for residents in areas where the ability to safely store bikes within a property, or the front/rear garden, is limited. This is part of the council's commitment to encourage more sustainable forms of transport for daily journeys. The council has received additional funding from Transport for London to support the implementation of more bikehangars in the borough, with Braybourne Drive identified as a potential location. Four bikehangars are being proposed, two two at the western end of Braybourne Drive, on the northern side of the road, near to the entrance with Nos 1-40 Braybourne Drive, and two at the eastern end of Braybourne Drive, on a section of land between Braybourne Drive and Stags Way. Closing Date 26 Feb. ([Details here](#)).

In addition the Government is consulting on a proposal to strengthen the powers available to police to deal with illegal traveller encampments. In summary, it appears to be proposing to implement essentially the same legislation that has been enacted in Ireland (and which, as a result, caused many of the travellers who had been based in Ireland to move over to the UK). The closing date for this is 4 March 2020. Further details may be found [here](#).

Local Events & Things To Do

BRENTFORD SPORTS FEST

If you're a runner, why not take part in Brentford's biggest running event – Brentford Sports FEST. The event will take place in the grounds of one of west London's most iconic houses, Syon House, and will offer runners the opportunity to run in the private grounds of the prestigious estate. The event will take place on 5 April 2020 and will offer a range of sporting activities for all the family. Residents of all ages and abilities can take part in a 10k run, 5k run, 1k children's fun run and a 5k Walk and Talk (in association with West London NHS Trust). [More details can be found here](#).

LOCAL HISTORY CONFERENCE

If you're interested in local history, you might want to go to the [40th West London Local History Conference](#), which takes place on Saturday 21 March 2020 at University of West London, Boston Manor Road TW8 9GB. This year's speakers will be considering the ways in which people in our area of South and West London have chosen to celebrate achievements and commemorate loss. The full day of lectures includes a presentation on the Isleworth 390 initiative which we reported on in a previous eNewsletter.

Tickets are £15.00 and available only in advance from sponsoring societies or by post from J McNamara, 31B Brook Rd South, Brentford TW8 0NN. Make out a cheque to "West London Local History Conference" and enclose a stamped addressed envelope. The conference is sponsored by the local history societies for Acton, Barnes & Mortlake, Brentford & Chiswick, Fulham & Hammersmith, Hounslow, Little Ealing, Richmond, Twickenham, Wandsworth and the West Middlesex Family History Society.

LOCAL HISTORY TALKS

The Brentford & Chiswick Local History Society has published details of its [Spring programme of talks](#) on a range of topics, including more about Boston Manor House, and how the Great West Road came into being (as the Brentford By-pass).

OSTERLEY PARK



There is a wide range of events on in Osterley Park over the coming weeks, including a ["Tiger who came to tea"](#) exhibition, in which *"Judith Kerr's much loved 1968 classic will be brought to life at Osterley this winter, complete with a life size tiger to cuddle and displays of illustrations to delight all tiger-loving generations"*. Details can be found on their website [here](#). It runs from Thursday, 23rd January to Sunday, 1st March.

Please also note that they are open every day except Christmas Day – useful if you just fancy a [walk around the park](#). Their opening times can be found [here](#).

They are also hosting a "Treasures of Osterley Exhibition" from 4 November 2019 to 23 February 2020. They state that *"Treasures of Osterley' explores the rise to fame and fortune of the Child banking family of Osterley Park through the exquisite works of art and furniture they collected. The centrepiece of the exhibition is a 17th-century painting of St Agatha by Italian artist Carlo Dolci. This has been reinstated into the Osterley collection and is on show for the first time after its recent acquisition by the National Trust."* Further details may be [found here](#) and also [here](#).

An OWGRA member went to the preview at the end of October and reports that the exhibition

is in the upstairs rooms and features some beautiful items which are normally not displayed. The Chinese lacquerware and Chinese and Japanese ceramics are very fine indeed.

BRENTFORD MUSICAL MUSEUM

If you are a classic/traditional music fan, Brentford Musical Museum has a programme of events detailed [here](#), with everything from sessions on their Wurlitzer to classic old films, Bollywood Dance Classes for 50+ and children, and Tea Dances. In addition to these events, they are open for visits with guided tours at specific times (see above link for details).

HALF-TERM CRAFT CLASSES FOR CHILDREN

If you're looking for something to occupy your kids during half-term, there are half-term craft classes for children on Wednesday 19 February (2pm – 4pm) in Brentford. The classes are for children over 8 years old and they will be introduced to string art, the little known craft of creating cards using colourful threads. Your child will leave this class with an understanding in how to embroider and sew. The location is The Maker Station, 40a Waterman's Park, Brentford TW3 0BB. [Book your child's place here](#).

FILMS AND EVENTS AT WATERMANS

If you want to see a film but want something different from the latest Hollywood blockbuster, then the Watermans Centre in Brentford has an eclectic programme of films detailed [here](#).

In addition they have announced their second year of [Friday Nights Live](#) with a brand new season for Spring 2020 that presents leading artists from an eclectic range of genres. On Fridays from 17 January 2020, audiences can choose from a range not to be found elsewhere in West London, including comedy, cabaret, digital performance, dance and talks.

SYON PARK

[Syon House and Gardens](#) are now closed for the winter. The new season will start on Monday, 16th March 2020.

GUNNERSBURY PARK

Gunnersbury Park has an ongoing programme of events, details of which can be found [here](#). These include a museum tour led by the curator, a paranormal investigation night and a historic kitchens tour.

TURNER AND THE THAMES

The first exhibition of J.M.W. Turner's original paintings in the house in Twickenham he designed for himself has opened, thanks to a generous loan from the Tate.

At the time Turner painted the exhibition's five oils on mahogany panels, he was renting Syon Ferry House in Isleworth, retreating from the pressures of London life. Although this house no longer exists, his experience there was instrumental in his subsequent acquisition in 1807 of a piece of land in Twickenham on which he later built Sandycombe Lodge to his own designs, and which is now open to the public. During Turner's time in Isleworth he acquired a little boat and modified it for use as a floating studio from which he could record first-hand impressions of the river. Further details are in [this article](#).

Crime and Local Policing

LOCAL POLICE NEWSLETTER & CATALYTIC CONVERTER THEFTS

The latest Newsletter from our local Police Safer Neighbourhood Team (SNT) is attached at the end of this eNewsletter. The SNT is the police team that is dedicated to the Osterley & Spring Grove ward. Sadly this Newsletter is all about the recent spike that has occurred in our area regarding thefts of Catalytic Convertors from cars parked in our area. There have been a number of such thefts in our area, including a Honda Jazz parked on The Grove, one resident unfortunately targeted for a second time in a month on Kingsley Avenue, one on Hogarth Gardens, a Lexus on Rosemary Gardens, a Toyota Auris on Hartham Road, a car on Harewood Road and a Toyota Auris on Brantwood Avenue

Essentially all cars have Catalytic Convertors these days, but if yours is a Hybrid, and especially a Toyota, Lexus, or older Honda, the miscreants seem to target these. Please do read the guidance from the police in their newsletter – and if you sadly do fall victim, please do report it to the police even if the criminals are long gone. Your report will help them build up a picture of the criminals and their “modus operandi” to help them catch them.

PEOPLE TRYING CAR DOORS



The police have also advised that they have received increased levels of reports across the borough whereby individuals are trying vehicle door handles to see if any vehicles have been inadvertently left open.

If you spot an individual doing this please report it to police via 999 or 101, this is an offence of motor vehicle interference and constitutes a criminal offence.

Please ensure you close all windows and lock your car at all times when away from it.

THEFT FROM MOTOR VEHICLES



The police have advised us that in the last couple of weeks there have received several reports of Theft From Motor Vehicle across the ward. In one case the victim unfortunately left valuables in their vehicle and the thief managed to steal everything ranging from bank cards to cash.

Please leave nothing of any value in your vehicle, and have nothing on display that may entice thieves, when it is unattended; ensure you take valuables out or you may lose them! Your mobile phone, coins for the car park, sunglasses, packs of medication or other items that can earn quick cash are irresistible to the opportunist thief. We have even heard instances of criminals smashing a car window to steal an iPhone charger cable...!. It only takes a thief a matter of a few seconds to smash a car window, take the items they have noticed and be gone – leaving you with a lot of inconvenience, and significant cost to repair the smashed window and replace what was stolen.

COLD CALLERS KNOCKING ON YOUR DOOR

We have heard reports from local residents of workers knocking on peoples' door offering to “steam clean” their drive. Please do not buy anything from someone such as that; they may be legitimate, but equally it could be a scam. Remember when they make their sales pitch to you that you know absolutely nothing about the quality of their work – and once you’ve said “yes”, you’re on your own...

SUSPICIOUS PEOPLE KNOCKING ON YOUR DOOR - 1

Another local resident had a case where someone knocked on their mother's door (she'd lived there for 32 years) and asked for someone she had never heard of. When she told the individual he had the wrong house they asked "isn't this xxx" quoting a completely different street.

This could be a genuine mistake – but we doubt it. This has all the hallmarks of a burglar checking a house is empty before raiding it (there were no cars in the drive at the time). Make sure your house looks occupied at all times (cars in the drive, lights on in the house, etc.) – especially if you're away for a period of time. Also consider investing in CCTV cameras, burglar alarms and/or motion-sensitive security lights (and make such security measures very visible to anyone looking over your house).

SUSPICIOUS PEOPLE KNOCKING ON YOU DOOR - 2

An individual has been seen walking onto residents driveways, and stepping back as soon as CCTV cameras / a camera doorbell was noticed to avoid being recorded. On finding a property without one, the individual knocked on the door and said their phone battery was dead and could they come inside and charge it. When told by the householder to hand the phone over for charging the individual tried to insist on coming inside to charge it themselves – which the householder sensibly refused to allow. No doubt once inside, the individual would have distracted the householder's attention before stealing valuables. The individual is described by the Police as being a Female White Eastern European, approximately 5'2 tall with dark hair.

Never allow anyone who do not know into your house unless they are a tradesman or someone you are expecting and have proof of their identify.

STABBING ON BOARD A TRAIN

[This report](#) provides further details of a stabbing that occurred on a train travelling between Ashford and Hounslow. Police and Paramedics attended at Hounslow station and treated a man in his thirties for multiple stab injuries.

The good news is that, thankfully, he has been discharged from hospital where his injuries were described as not life threatening and that 2 people have been arrested and remain in police custody on suspicion of grievous bodily harm.

The deeply depressing news is the suspects' age - a 15-year-old girl and a 16-year-old boy.

SIGN UP TO OWL

[OWL](#) helps to keep communities safe, reduce crime and keep people informed of what's going on locally. It's a shared, secure platform for the public, police and local authorities to maximise the potential of Neighbourhood Watch, Rural Watch, Business Watch and dozens of other schemes. OWL sends you the latest local crime alerts and provides management tools for maintaining and expanding watches. We recommend local residents sign up for it; you will then receive regular emails from the police with information on crimes in the area, crime prevention advice, and more.

Other News

OWGRA RESTART LITTER PICKS



OWGRA Community Litter Pickers have started the New Year with great enthusiasm, and have done 2 litter picks already. The first one on Saturday morning, 18 January, along the western section of Jersey Road, and then on Saturday 25 January along the section of Wood Lane north of the A4. The Wood Lane section was the most challenging litter pick we've done so far, as it involved climbing into dense shrubbery along the perimeters of the Nishkam School. Grasshoppers and Wycombe House.

We are very grateful to Memories of India and Wycombe House for providing well-deserved refreshments after the litter picks on those two occasions. [More pictures area available on our website.](#)

We plan to do Windmill Lane again within the next few weeks, and also the shrubbery in Jersey Gardens. If you have any other suggestions or would like to join our happy group of OWGRA Community Litter Pickers, then please contact Barbara on 07767 826197, or e-mail info@owgra.org.uk. It's a great way of meeting local residents, creates a community spirit, provides a decent work-out and enhances the look of our area!

A request to all our residents, as we all know that littering is anti-social. If you see litter outside your house or it has blown into your garden, please pick it up and dispose of it. If we all did our bit, the area would look so much better! You might even have noticed that we have some amazing residents who regularly litter pick. If you see them out and about picking litter, do say hello and thank them for their community spirit.

S.E.N.D. PARENTS GROUP



Do you have a child with Special Educational Needs and would like to meet up with other parents in a similar position? SEND Parents Group meets every Tuesday during term time, from 9-10 am at Marlborough community centre.

This is stated as being *"a friendly and informal parents group for families of children with special educational needs / different abilities. All welcome, Tea & Coffee provided."*

Further details are in the flyer opposite.

ESCAPING TROLLEYS

Trolleys are a godsend when you're walking round your local supermarket or DIY store picking up items to buy, taking them to the checkout to pay, and then to your car to take home – which is where the story should end. Unfortunately some people (who shall remain nameless) choose instead to use the trolley to take their shopping home, and then dump the trolley. We've all been walking down the street only to see a dumped trolley and say *"how did that get here?"* followed by *"someone should do something about that"*.

Well, in our mobile phone-dominated world, you'll be glad to hear there's an app for that - "[Trolleywise](#)". They have contracts with a number of national chains to collect any trolleys that have "escaped" from the grounds of their stores. Via the app all you do is take a photo (of the trolley that is...), use the phone to fix the location, add a couple of details and the company behind the app will do the rest (pick up the trolley, return it to its owner and collect a fee).

CROSSRAIL WILL BE LATE

There is conflicting news as to when Crossrail will open. The first story regarding Crossrail, quoting TfL, stated that, in terms of how it impacts West London, we won't see anything until December 2022. [This article in TW8](#) explained that the connection from Heathrow to central London (i.e. from West London to Central London) will not open until December 2022. Parts of the line will open earlier (e.g. the eastern end in May 2022) but to use it we have to first get into central London – which needs the West London part of it.

Then, [in a later piece](#), the Mayor of London, is quoted as insisting that the whole line will be open by May 2022. We'll leave residents to decide who to believe.

The actual [route of Crossrail](#) is shown here.

BUS TRAVEL GETTING SLOWER

[This article](#) reports that bus travel is getting slower. Average bus speeds have now fallen below nine miles per hour for the first time, and London Travelwatch says this is a "major factor" in declining use. This is stated as being due to congestion on city streets holding up services. Slower road travel is borne out by data on traffic and air quality around Chiswick roundabout. Also, buses are obliged to observe the 20mph speed limit which is now widespread. The number of bus journeys in the capital has apparently been falling since 2013/14 from a peak of 2.4 billion, according to Department for Transport data, down to 2.2 billion bus journeys in 2018/19 – down 200 million in five years.

Anyone who uses buses regularly (or cars for that matter) can attest to the fact that the roads are now at the limit of their capacity with gridlock and queues now almost the norm in any journey – and yet councils such as LBH are still building thousands (and planning to build tens of thousands) of new flats to accommodate huge numbers of new residents, all of whom will then seek to travel....One really does wonder.....

A&E TIMES GETTING LONGER

Accident and emergency waiting times in London are now at their worst ever, [new Government figures reveal](#). In December, just three in five patients were seen within four hours at major emergency rooms in the capital. For major A&Es, not a single NHS trust in London hit the national waiting time target – that 95 per cent of patients are seen within four hours. And these centres dealt with 8,000 extra patients last month compared to December 2018.

But never mind, once those tens of thousands of new flats have been built and occupied by those many tens of thousands of new residents.....

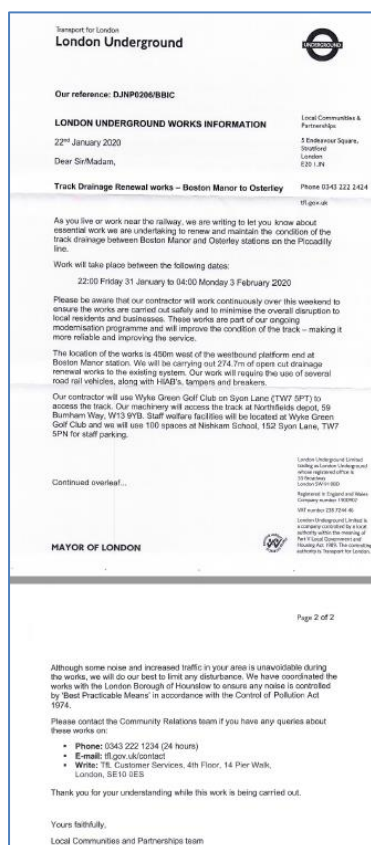
SOUTH WESTERN RAILWAYS FRANCHISE "NOT SUSTAINABLE"

And just to complete the sunny picture of how our infrastructure is perfectly ready and able to accommodate all the many tens of thousands of people in new flats that the council want built in the area, now comes news that the government is considering nationalisation as one of the options for the [future of the South Western Railway \(SWR\) franchise](#), with other options including a new contract with different financial terms..

SWR's latest accounts showed that the train operating company is making substantial losses and the auditors have said there is 'material uncertainty' over its operations. SWR reported losses of £136.9million as they wrote off £146million in the value of a contract in the year to March 2019. On an operating basis excluding the write off, the company saw revenues of over one billion pounds and saw passenger growth of 6% with a profit of £7million. The report concludes, *"The directors have concluded that there is a material uncertainty that may cast significant doubt on the company's ability to continue as a going concern."*

NO TUBE TRAINS THIS WEEKEND

Local residents have probably received the letter opposite from London Underground about maintenance work underway over the weekend from late evening of Friday, 31st January to early morning on Monday, 3rd February.



The letter provides lots of details about where the work will be, where the workers will park, etc.

What the letter does not make clear is that the Piccadilly line will be closed between Heathrow and Hammersmith during this period, with buses operating a rail replacement service. Further details may be found here on the [TfL website](#). For residents the key statements are

"PICCADILLY LINE: Saturday 1 February, from 0345 and all day Sunday 2 February, no service between Hammersmith and Heathrow (all terminals) / Uxbridge. Use Metropolitan line between Rayners Lane and Uxbridge, and London Overground between Gunnersbury and Richmond, replacement buses operate.

Replacement buses operate:

Service PL-1, includes overnight service: Hammersmith - Ravenscourt Park - Stamford Brook - Turnham Green - Chiswick Park - Gunnersbury - Acton Town - Ealing Common - Ealing Broadway (For Central line and TfL Rail) - South Ealing - Northfields - Boston Manor - Osterley - Hounslow East - Hounslow Central - Hounslow West - Hatton Cross - Heathrow Central Bus Station (For Terminals 2 and 3). Late night and overnight buses

also serve Heathrow Terminal 5, and late evening Sunday buses additionally stop at Earls Court and West Kensington.

LOCAL CARE AND COMMUNITY SERVICES

Careplace www.careplace.org.uk/ is a web directory of local care and community services and how to pay for them. On this page www.careplace.org.uk/Services/16122 you can download the useful current "Guide to Self-Funding Adult Social Care and Support Services in Hounslow".

The Community Information Guide from LB Hounslow is an online directory of all of the voluntary and community groups in Hounslow and information about community buildings that are available to hire in the borough <https://cig.hounslow.gov.uk>

FANCY WORKING IN SYON PARK ?

If you're someone who works in a busy part of London and always wanted to work somewhere with open space around you, Syon Park is looking for staff. There are three roles open

- [Several Syon House Guides & Retail Assistants \(Seasonal Staff/ Part-time\)](#)
- [One Events Executive \(Full-time/ Permanent\)](#) and

- [Housekeeping Assistant \(Full-time/Permanent\)](#) .

Click on the links above for more details if you're interested.

FANCY BEING A BOARD MEMBER OF A LOCAL SCHOOL ?



Oaklands School group is based in Osterley (on the Great West Road close to Osterley Station). Their specialist independent college is called Great Oaks College, which was set up in 2018 to provide extended educational opportunities to young adults who have learning difficulties in West London. Their educational programmes are designed to prepare students for active lives, increasing the opportunities available to them through increased independence.

They have vacancies for new Board members and would like to encourage local people to apply. They are looking for people with experience in business, finance, marketing, fundraising and above all people who understand the challenges faced as children with special education needs become young adults. Board members will need to attend one meeting per term which are currently held in the evening, and possibly two finance meetings during the year. If you are interested please email office@greatoakscollege.com

WANT TO JOIN THE TfL YOUTH PANEL ?

Applications are now open for new recruits to the TfL Youth Panel aged between 16-25. The Youth Panel ensures London's young people have a direct voice shaping TfL policy and decision-making and can represent youth audiences in TfL campaigns, projects and consultations. They also have the opportunity to build their team work, project management and debating skills by helping to organise and run the annual Youth Participation day at the London Transport Museum. [Interested applicants can apply here.](#)

FANCY ACTING IN A PLAY AT WATERMANS CENTRE ?

St Faith's Players will be producing 'A Funny Thing Happened on the Way to the Forum' – an award-winning and very funny musical by Stephen Sondheim on 4th-6th June at the Watermans Theatre. They are looking for people to act in it - all are welcome (over the age of 15) whether you have acted before or not. Further details, including when and where the auditions are being held are in this [TW8 article](#). Note the dates for the auditions are passed but you can still contact them if you're interested.

ARE YOU A CARER LOOKING FOR SUPPORT ?

If you've found yourself being a carer for a friend, relative, etc. and would like to talk to others in a similar situation and get support and advice on how to cope, then this will be of interest.

The first meetings have already taken place, but the next ones are 7 Feb (for people with long-term conditions) and 17 Feb (for people with learning disabilities). See leaflet opposite.

For more information, contact Hestia (the organization running these meetings) on 0208 568 7881 or HounslowLIFESupport@hestia.org

In addition Hounslow Council also provide support for carers, with their [Carer Information Factsheet \(click here\)](#), which provides a list of useful support services for carers.

Carers Support Group Meetings

A chance to meet other carers, share knowledge and get support from each other.

We also invite speakers on subjects that may interest you.

Location: Hestia CAN Mezzanine Level 2 Treaty Centre, Hounslow High Street, TW3 1ES

Carers for those with Long-Term Conditions

- 03rd Jan 2020
- 07th Feb 2020
- 06th March 2020
- 03rd April 2020
- 01st May 2020

All 13:30 - 15:30
(usually the 1st Friday of the Month)




Carers for those with Learning Disabilities

- 20th Jan 2020
- 17th Feb 2020
- 16th March 2020
- 20th April 2020
- 18th May 2020

All 10:30 - 12:30
(usually the 3rd Monday of the Month)

Open Invite!
Please bring along your friends who also have caring responsibilities.

For more information, please contact us on
0208 568 7881 or HounslowLIFESupport@hestia.org

If you need advice from the council on your own caring role, please email MyIndependence@hounslow.gov.uk or call **020 8583 3942**. If you need assistance from Adult Social Care urgently or need to contact the Safeguarding Team to report an incidence of abuse or neglect, you should call the **First Contact Team** on **020 8583 3100** (out of hours 020 8583 2222) or email adultsocialcare@hounslow.gov.uk.

LIVING WITH KIDNEY PROBLEMS ?



How can I do more exercise?
how?
I just need to rest
help
Is it ok for me to be vegan?
when?
medication
I want to...?
What if I'm vegetarian?
I need help with relationships

Kidney PATIENT EXPO 2020

How can I control my blood pressure?
I fancy a Holiday
I want to travel
options
dosage
What is peritoneal dialysis?
where...?

keep fit
I have so many questions about transplantation
What are home therapies?
I fancy a cruise
What are the side effects?

This is a FREE Patient Information Event especially for you for ONE DAY ONLY!
Open from 10:30am-4pm (come and go as you please)
Pre-register now or register on the day.
www.westlondonkpa.org/expo2020 or tell your renal nurse.

We've got it covered.
Wed 4th March 2020
W12 Conferences, Artillery Lane,
150 Du Cane Road, London, W12 0HS
(next to / within the grounds of Hammersmith Hospital)

Proudly Presented by
West London Kidney Patients' Association

If you (or someone you know) is living with kidney problems, you may be interested to hear that the West London Kidney Patients' Association will be presenting the Kidney Patient Expo 2020 on 4th March. This is a Patient Information Event for all things related with being a kidney patient.

The event opens from 10.30am to 4pm, and is a FREE event with an opportunity to learn more about Kidney Failure and how to manage and thrive with the changes it brings. Visitors can meet and chat with specialists and network with fellow patients throughout the day, and learn about diet, fitness, holidays, insurance, treatment options and more. There will be plenty of information on hand to take away. Pre-registration is helpful.

It is being held in Hammersmith at W12 Conferences, Artillery Lane, 150 Du Cane Road, W12 0HS (next to / within the grounds of Hammersmith Hospital) and is free to attend.

Further details can be found at www.westlondonkpa.org/expo2020 - see the poster above.

TW8 NEWSLETTER

You might have noticed that we frequently give links to news and stories on <http://www.brentfordtw8.com/> (it covers TW7 as well as TW8). This is a very informative website, and you can sign up on their home page to receive their weekly e-newsletter. There are also similar websites for Chiswick (<http://www.chiswickw4.com/>) and Ealing (<http://www.ealingtoday.co.uk>) if you are interested.



Osterley & Spring Grove Safer Neighbourhood Team (SNT) Newsletter

January 2020

Your Safer Neighbourhood Team

Hello everyone from your local safer neighbourhood team! We hope you and your families have enjoyed the festive period and have a happy, prosperous new year ahead. PC Scully and PC Aulakh here from the Osterley & Spring Grove safer. We have a new Police Community Support Officer, PCSO Singh who has now joined the team. We aim to conduct high visibility patrols across the ward to tackle all levels of crime and Anti-Social behaviour effectively.

We would encourage you to continue reporting all crime to us via the appropriate channels being 999 in an emergency or 101 in a non-emergency. You can also report online on met.police.uk as well as on Crime Stoppers.

The more you report these crimes the better equipped we are for delegating resources and establishing patterns of criminal behaviour.



 **CRIMESTOPPERS**
0800 555 111

This edition of the newsletter is targeting Catalytic Converter Theft due to an unfortunate spike whereby there have been repeat victims.



**METROPOLITAN
POLICE**

Catalytic Converter Theft



What makes your catalytic converter valuable?

- Precious metals - Platinum, palladium and rhodium - are coated onto this ceramic structure as catalysts (a catalyst modifies and increases the rate of a chemical reaction without being consumed itself) for the reactions that "clean" the exhaust.
 - Did you know that RHODIUM is worth more than GOLD?!
- To prevent theft of this precious part you can:
- Park in well lit busy areas.
 - Look out for people working under cars for no apparent reason.
 - If the vehicle has easy access to underneath i.e vans and 4x4's consider investing in a catalytic converter marking kit, this makes it easier to trace back if it is ever stolen.
 - Garage your vehicle whenever possible.



**METROPOLITAN
POLICE**





Osterley & Spring Grove Safer Neighbourhood Team (SNT) Newsletter

January 2020

Current Crime Trends

Theft From Motor Vehicles / Catalytic Converters:

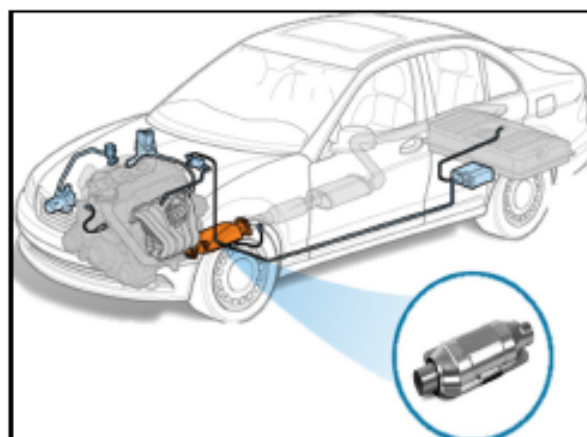
There have been thefts of catalytic converters from motor vehicles recently. Unfortunately we have had recent cases whereby there have been repeat victims. Due to this we are putting more emphasis on this issue and doing our best to ensure you are all fully informed. Please familiarize yourselves with the following tips regarding this current trend and what you can do to be more secure:

- ⇒ Always park your vehicle in a garage if possible
- ⇒ Alternatively, park your vehicle in a manner which restricts access to underneath
- ⇒ If your catalytic converter is 'bolted on' consider having these bolts welded. Criminals are looking for a quick getaway and this would make it extremely difficult for them to achieve this
- ⇒ Mark your catalytic converters with a serial number to make it distinctive
- ⇒ Consider installing a dash cam in your vehicle for added security with a motion sensor. Ensure that the camera is facing the front and the rear of your vehicle
- ⇒ Avoid parking your vehicle half on the road and half on the pavement as this would make it easier for thieves to access the catalytic converter

Theft of Catalytic Converters:

If you see someone acting suspiciously underneath a vehicle please report it to police. If you can do so safely, try obtaining as much information as possible including suspect descriptions and vehicle registrations.

Purchase a cage clamp, this is a cage device which locks in around the converter making it more difficult to remove.



METROPOLITAN
POLICE

